



TARNELL
TRADEMARK WITH AN EMBLEM

Sample Plastics, Inc.

(C1234-F567890)

251 E. Central Ave.
Newtown, RI 02903
Tel: 401-777-5678
www.11sampleplastics.com

Mail: P.O Box 251
Newtown, RI 02903
Tel: 401-777-5678
Fax: 401-444-1111

Processor Profile:

Proprietary Manufacturer of **Dental Instrument Parts, Medical Components - Cages, Housewares - Cutlery, Baskets Disposable Bowls and Trays** for the **Institutional, Medical, Consumer, Houseware** End Markets

Company Standing:

TCO Coverage Since	1969	Years in Biz	65
State Registered	RI	Employees	
Structure	CORP	FY End	9
Stock	PRIV		
Worth	LOW 8 Figures	Est Sales:	MOD 8 Figures

Financial Stability Score, March, 2006:

B75

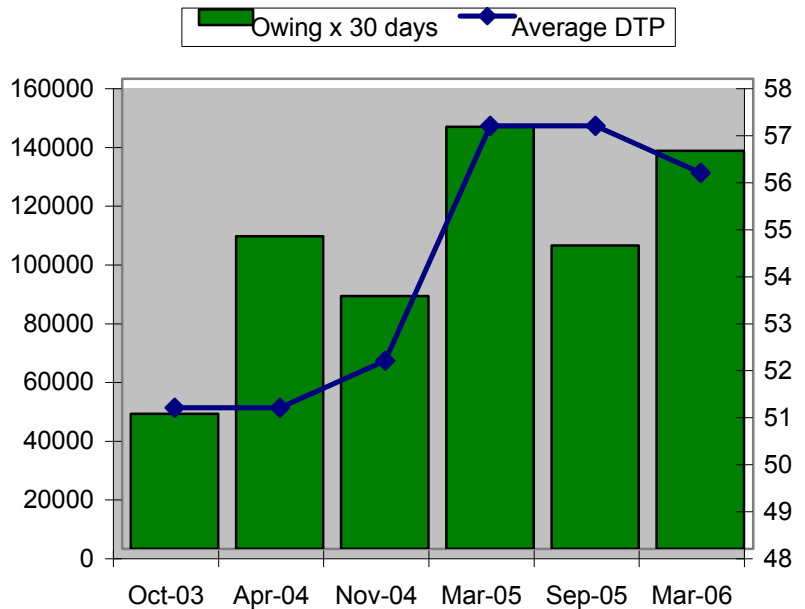
See Score Key for evaluation.

Business Standing

3/2007 Insight PPR: 12 experiences. Average days to pay were 56. Weighted average days to pay were 55. Billing terms vary. High credit \$487,596.

The company's average days to pay for reporting cycles dating back to 6/2003 averaged 53 days. The weighted average days to pay for the same period averaged 52 days. Since 7/2003, high credit increased from \$367,290 to \$487,596. Average days to pay increased from 51 to 56; weighted average days to pay increased from 52 to 55 and number of experiences increased from 9 to 12. Total owing increased from \$541,663 in 7/2003, peaking at \$1,156,195 in 11/2004 before falling to \$500,000 range on last 2 PPRs.

Of the current amount owed, 70% is owed to producers and 30% is owed to distributors.



Management:

George Jones, Chairman	Dominant Owner	401-111-1234	GJ@sampleplastics.com
Alan Green, Pres.	Oversees equipment purchasing	401-111-7890	AG@sampleplastics.com
John White, VPres.	Oversees finances and operations.	401-000-1234	JW@sampleplastics.com

Resin and Material Converting Assets:

45 Horizontal Injection Molding Machines 75 ton - 600 ton; 3 - 120 oz.
8 Vertical Injection Molding Machines Sizes Unspecified

Resin Purchasing Tendencies:

Consolidated Annual Purchases approx. 22 million lbs. **Prime, Wide Spec, Regrind** materials

Primary Materials: **Polypropylene, Nylon**

Other Purchases: **LDPE, GPPS, Pcarbonate, color concentrates**